

complete and beneficial utilization and enjoyment by the public of the great natural resources so important to the economic and cultural growth of the regions within which the forests are situated. It would complicate the problems of administration and protection.

"Need exists," says the Chief Forester, "for the most intimate and complete coordination between the National Forest highway and road system and the management of the soil, timber, forage, water, scenic and wildlife resources of the National Forests."

CAMP OVENS AND OVEN SHELTERS

By PAUL B. RISS, *Director Bureau of Parks, County of Allegheny, Pittsburgh, Pa.,*
with Photographs by the Author

No single feature of the picnic ground seems quite so indispensable as that of the camp oven. Relatively, its position thereto is that of the hearth, radiating cheer and life in varied form. Hence any attention paid to its development will contribute to a greater enjoyment of the outing from several standpoints and therefore well justifies any additional costs.

Camp ovens from the outset should be

given consideration as an approaching step of greater convenience, utility, and beauty beyond the primary needs to just boil coffee. Such a procedure will be directly responsible in imparting better park character, sincerity, and strength of design.

Wherever possible, native stone and wood should be given preference, in its composition, materials related to and of the surroundings. Such media will accomplish



ROCK STRATIFICATIONS ARE ALWAYS OF INTEREST IN THE LANDSCAPE. HERE THEY HAVE BEEN COMBINED TO FORM A CAMP OVEN, COMPLETE WITH SHELVES AND SEATING ARRANGEMENTS, AND SIMULATED OUTCROPPINGS. YOU GUESSED IT, THE CREVASSE IS NOT THE CHIMNEY, WHICH IS INVISIBLE AND LOCATED TWO FEET TO THE LEFT



A SEMI-CIRCULAR

one's aims more effective reduction of non-native too gives opportunity and interesting design aim in softer expression goes a step further in



A MODIFIED COURT

the Chief Forester, te and complete co- he National Forest em and the manage- nber, forage, water, sources of the Na-

ELTERS

Pittsburgh, Pa.,

an approaching step utility, and beauty ds to just boil coffee. e directly responsible character, sincerity,

otive stone and wood nce, in its composi- and of the sur- a will accomplish



LANDSCAPE. HERE WITH SHELVES YOU GUESSED AND LOCATED



A SEMI-CIRCULAR ARRANGEMENT THAT WILL ACCOMMODATE PICNIC GROUPS OF THIRTY PEOPLE FOR SOCIAL GATHERINGS

one's aims more effectively than the introduction of non-native materials. Their use too gives opportunity for more delightful and interesting design, supplementing its aim in softer expression. Native material goes a step further in that it makes possible

a better and more unified blending with the landscape and, if well executed, may even become an integral part thereof.

Native materials make it possible to accomplish still more. Natural outcroppings of stone can be elaborated through an intro-



A MODIFIED COUNCIL RING WITH ITS STONE ALTAR IN THE LEFT FOREGROUND, AN IDEAL LAYOUT FOR CAMPFIRE GATHERINGS



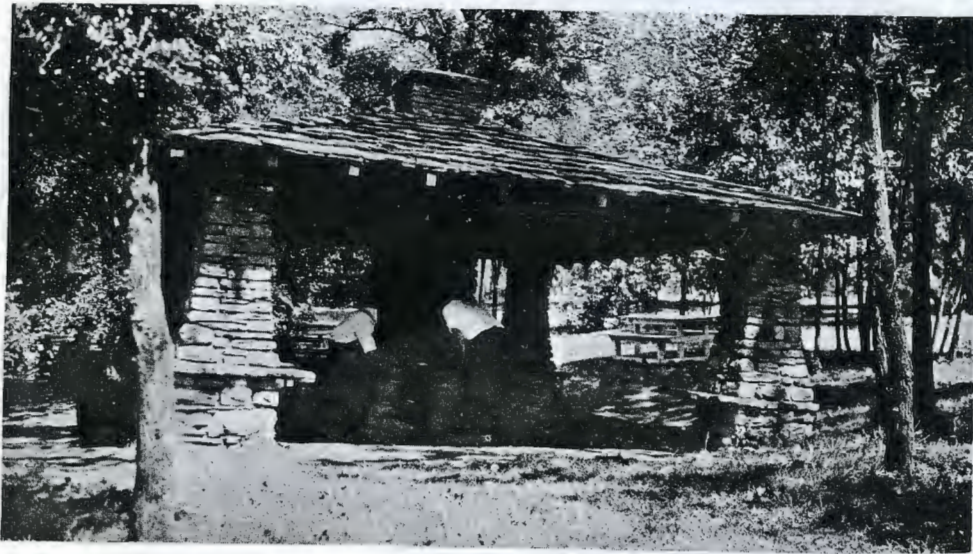
A FEW MORE BOULDERS HAVE BEEN ADDED

duction of indigenous rock in which the ledges may serve as shelves and seats. The planting of its fissures with wild plants will soften it down to utmost naturalness.

Again, it is possible to re-arrange groupings of boulders and add others to represent all the essentials of a complete picnic camp-

fire group, containing fireplace, stone seats, flat-topped boulders serving as tables, council rings and altars for campfire gatherings, trails and retreats, and suitable planting to complete its setting.

In all cases, convenient seats of stone or wood, shelves and tables should be found



AN OVEN SHELTER OPEN ON ALL SIDES. FOUR HEARTHES, EACH COMPLETE WITH AS MANY LIDS, WILL CARE FOR FIFTY PEOPLE AT A TIME



HILLSIDE OVEN SHELTER
WADING POOL

among the simplest types. Again one may add stone ovens, roasts and modified ovens may be of the same type. There are untold examples



OVEN SHELTER
THE NATURE TYPE



D
g fireplace, stone seats,
erving as tables, coun-
or campfire gatherings,
and suitable planting
5.
ient seats of stone or
bles should be found



ACH COMPLETE
F A TIME



HILLSIDE OVEN SHELTER THAT INFLUENCED DEVELOPMENT OF BRIDGE, DAM,
WADING POOL, SAND BEACH, AND A MORE INTIMATE PICNIC AREA

among the simplest type of camp oven while of utility and beauty. Or they may be more
again one may add square hearths for corn elaborate, of semi-circular shape in which
roasts and modified council rings. The oven is the central figure, flanked by
The ovens may be of the simpler sort, of which stone seats or tables, or both, or a combina-
there are untold examples, of varying degree tion council ring, an elaboration of the



OVEN SHELTER, TUPELO CLEARING, AT THE SUMMIT OF THE RIDGE, BESIDE
THE NATURE TRAIL, IMPARTIALLY SERVES PICNICKER AND NATURE STUDENT



ON THE SIDE OF AN OLD QUARRY

An eight foot parapet wall makes possible a generous forecourt containing an open hearth, and two additional fireplaces. Stone tables are arranged on each side of the oven shelter's long axis, and are given unity and greater intimacy by sheltering pergolas.

semi-circular oven, offering a little broader use to campfire assemblies.

But the oven offers opportunity where area and topography permit to combine oven with shelter, providing and assuring means

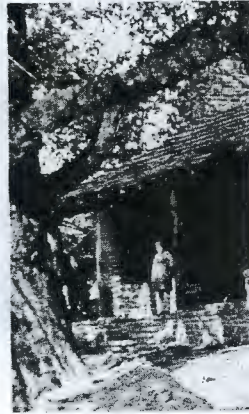
of cooking under cover, that light showers and heavy downpours may not altogether dampen the ardor of the picnic spirit. Their use here in Allegheny County during the coldest of winter is ample proof of their



THE MOUNTAIN TYPE OVEN SHELTER WITH OVENS ON TWO LEVELS, ONE UNDER COVER, THE OTHER OUTDOORS



THE UPPER



A CHARMING OV.

Two centenarian apple tree timbers from an old grange vaged from the old farm rebellion days in a ne responsi

worth. These structur wide range of design, pr of campfire requirement



aining an open hearth,
of the oven shelter's
ring pergolas.

er, that light showers
s may not altogether
the picnic spirit. Their
y County during the
ample proof of their



WO LEVELS,



THE UPPER LEVEL OF THE MOUNTAIN TYPE OVEN SHELTER



A CHARMING OVEN SHELTER

Two centenarian apple trees, a few hand-hewn timbers from an old granary, and stones salvaged from the old farmstead from whiskey rebellion days in a new combination, are responsible.

worth. These structures again permit a wide range of design, provided the principle of campfire requirements are observed; they

too should be composed of native log and stone and split cedar shingles, and should provide ample seating and table arrangement for groups of from twenty-five to fifty people.

Here, in the Allegheny County parks, every camp oven is well studied and designed with special reference to its location and surroundings. This procedure has enabled us to add considerable and intrinsic interest to otherwise commonplace groves, stimulating a desire for their use, their popularity relieving congestion in naturally more attractive groves.

Camp ovens and oven shelters attractively designed and located are suggestive year round invitations that not only add to more distinctive beauty, individuality, and convenience of the park, but at the same time increase its service beyond that of the accepted open season.